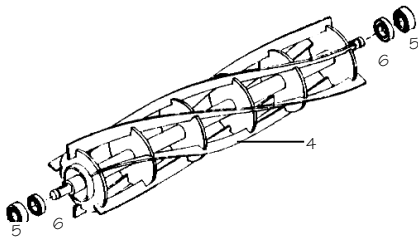
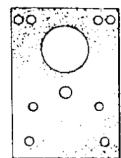
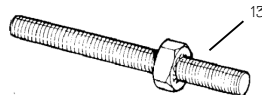
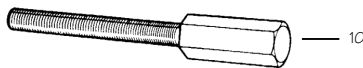
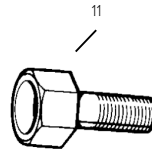
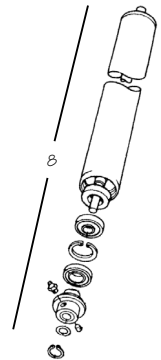
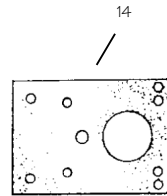
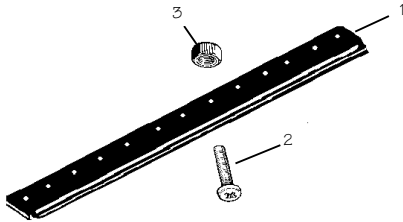
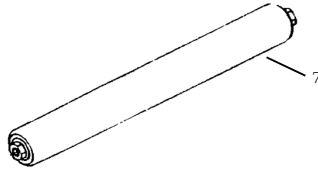


MODEL 1030 (10") CUTTERHEAD  
 SUITABLE FOR 1030 CUTTERHEAD 10"ø CUTTING CYLINDER GANG MOWERS



9



15

**MODEL 1030 (10") CUTTERHEAD  
SUITABLE FOR 1030 CUTTERHEAD 10"ø CUTTING CYLINDER GANG MOWERS**

Key No	OEM Part No	Description	Our Part No	Price £
-	63-07-005	Bottom Blade 7 Hole Standard Cut	G00102	15.55
-	63-07-034	Bottom Blade 7 Hole Low Cut	G00104	15.75
1	63-07-066	Bottom Blade 13 Hole Standard Cut	G00107	17.95
1	63-07-067	Bottom Blade 13 Hole Low Cut	G00108	18.95
2	63-07-061	Screw, Bottom Blade (Allen Type)	G60042	0.31
3	ZNB5F000U	Nut for Bottom Blade Screw (Binx Stiffnut)	G60042A	0.32
4	63-07-069	4 Bladed Cutting Cylinder (10" Ø)	G00109	113.30
4	63-07-070	6 Bladed Cutting Cylinder (10" Ø)	G00110	119.95
7	63-07-045	Smooth Roller Assembly (as original) 3" diameter	G71013	83.15
7	N/A	Smooth Roller Assembly (as original) 2½" diameter	G71018	93.20
8	N/A	Heavy Duty Roller Assy c/w Replacable Bearings & Shaft	G71013HD	108.10
9		Roller Seal Kit (for G71013HD only)	G71013SK	22.50
5	63-07-036	Bearings - Cutting Cylinder	G00118	3.75
6	63-07-037	Oil Seal Cutting Cylinder Motor Side	G00119	2.35
6	63-07-038	Oil Seal - Cutting Cylinder	G00120	2.45
10	63-01-245	Adjuster	G00125	7.55
11	63-01-148	Grease Bolt	G00127	6.82
13	63-07-038	Adjuster Stud (Roller)	G00126	5.35
14	63-07-024	Gear Box Gasket	G00130	0.84
15	63-07-025	Motor gasket	G00129	0.84
16	63-01-143	Gear box and bearing housing pivot	G00131	4.75
17	63-01-113	Adjusting and clamp stud	G00132	10.95

**FOR MK 3 CUTTER HEAD SEE PAGES 114 - 116**

**E MAIL  
sales@garfitts.com**