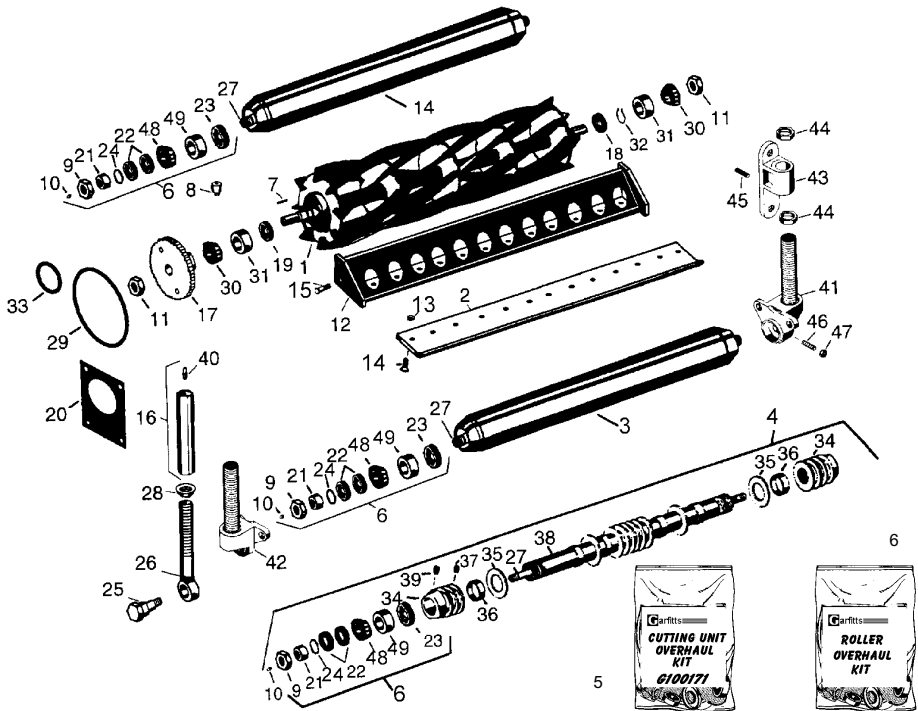


## GANG MOWER ESP UNITS MODEL 303,305,756,856,3325 & 3365



| Key No                         | OEM Part No | Description   | Our Part No | Price £ |
|--------------------------------|-------------|---|-------------|---------|
| <b>Cylinders Available</b>     |             |   |             |         |
| 1                              | AET10856    | Cylinder 6 blade  | GAET10856   | 135.15  |
| 1                              | AET10857    | Cylinder, 8 blade   | GAET10857   | 161.25  |
| 1                              | AET10858    | Cylinder, 10 blade  | GAET10858   | 179.25  |
| <b>Bed Knives Available</b>    |             |   |             |         |
| 2                              | ET16755     | Bed knife, Low cut, 3/8" H.O.C.   | GET16755    | 25.95   |
| 2                              | ET16756     | Bed knife, fl" H.O.C.   | GET16756    | 23.95   |
| <b>Rollers Available</b>       |             |   |             |         |
| 3                              | AET10873    | Solid roller, 3" H.D.   | GAET10873   | 131.20  |
| 4                              | AET10874    | Grooved roller assembly   | G500508     | 170.05  |
| <b>Overhaul Kits Available</b> |             |   |             |         |
| 5                              | -           | Cutting unit overhaul kit, contains<br>1 x GM18237, 1 x GAP19509, 1 x GU10776<br>1 x GET10873, 1 x GH88900, 1 x GAN121759,<br>2 x GJD8225, 2 x GJD8187, 2 x GA31869                             | G100171     | 24.95   |
| 6                              | AET10632    | Roller overhaul kit, fits Mk II & ESP 3" solid & grooved rollers, contains<br>2 x GET15756, 2 x G254-79, 2 x G254-78,<br>2 x G237-54, 2 x GET15726, 2 x G3296-15,<br>2 x G471231, 4 x GET15755" | GET10632    | 38.95   |

Parts are not original. OEM part numbers are for reference purposes only.

**GANG MOWER ESP UNITS**  
**MODEL 303,305,756,856,3325 & 3365**

| Key No                | OEM Part No | Description                              | Our Part No | Price £ |
|-----------------------|-------------|--|-------------|---------|
| Other Parts Available |             |  |             |         |
| 7                     | 26H76       | Key, reel                                | G26H76      | 0.17    |
| 8                     | JD5801      | Relief fitting                           | G302-14     | 2.20    |
| 9                     | NI01345     | Locknut                                  | G3296-15    | 1.31    |
| 10                    | JD7759      | Grease Nipple                            | G471231     | 1.35    |
| 11                    | A31869      | Locknut, Cylinder                        | GA31869     | 1.20    |
| 12                    | AET10829    | Backing bar, bed knife                   | GAET10829   | 139.95  |
| 13                    | 14M7400     | Locknut, bedknife                        | G14M7400    | 0.50    |
| 14                    | 19M5055     | Screw, bedknife                          | G19M5055    | 0.40    |
| 15                    | 19M7783     | Bolt, bed bar                            | G19M7783    | 0.40    |
| 16                    | AET10880    | Adjuster                                 | GAET10880   | 8.75    |
| 17                    | AET11211    | Gear, Cylinder                           | GAET11211   | 56.95   |
| 18                    | AN121759    | Seal, Cylinder                           | GAN121759   | 2.79    |
| 19                    | AP19509     | Seal, Cylinder                           | GAP19509    | 3.25    |
| 20                    | ET10873     | Gasket, 4 bolt                           | GET10873    | 1.40    |
| 21                    | ET15726     | Wear sleeve, hardened                    | GET15726    | 6.95    |
| 22                    | ET15755     | Seal, outer                              | GET15755    | 2.45    |
| 23                    | ET15756     | Inner seal                               | GET15756    | 2.65    |
| 24                    | U46731      | O-ring                                   | G237-54     | 0.30    |
| 25                    | ET16896     | Shoulder bolt                            | GET16896    | 6.95    |
| 26                    | ET16897     | Eyebolt, Cylinder                        | GET16897    | 14.95   |
| 27                    | ET16934     | Shaft                                    | GET16934    | 23.95   |
| 28                    | ET17361     | Flanged nut, eyebolt                     | GET17361    | 0.25    |
| 29                    | H88900      | O-ring, cover to gear case               | GH88900     | 1.95    |
| 30                    | JD8187      | Cone, reel bearing                       | GJD8187     | 4.10    |
| 31                    | JD8225      | Cup, reel bearing                        | GJD8225     | 2.25    |
| 32                    | M18237      | Snap ring, reel                          | GM18237     | 1.35    |
| 33                    | U10776      | O-ring, motor to cover                   | GU10776     | 1.65    |
| 34                    | -           | Threaded roller end, 3" Ø                | G500511     | 41.95   |
| 35                    | -           | 3" washer, repairable grooved roller     | G150673     | 0.60    |
| 36                    | -           | 1 " HD Spacer, repairable grooved roller | G150676     | 1.40    |
| 37                    | -           | Nyloc set screw, 3/8"-16 x 3/8"          | G150691     | 0.55    |
| 38                    | -           | Threaded tube fits G500508               | G500507     | 26.95   |
| 39                    | -           | Pressure relief fitting                  | G170714     | 4.19    |
| 40                    | JD7884      | Grease nipple                            | G302-5      | 0.52    |
| 41                    | AET10854    | Roller adjuster, oblong hole             | GAET10854   | 47.95   |
| 42                    | AET10855    | Roller adjuster, round hole              | GAET10855   | 47.95   |
| 43                    | AET10877    | Roller support, includes GR30587         | GAET10877   | 29.95   |
| 44                    | 14M7240     | Nut, roller adjusting                    | G14M7240    | 1.65    |
| 45                    | R30587      | Dowell pin, support                      | GR30587     | 0.65    |
| 46                    | MT49        | Set screw, adjuster                      | GMT49       | 0.80    |
| 47                    | M82222      | Locknut, adjuster                        | GM82222     | 0.20    |
| 48                    | JD8188      | Cone, bearing                            | G254-78     | 4.15    |
| 49                    | JD8226      | Cup, bearing                             | G254-79     | 2.85    |

Parts are not original. OEM part numbers are for reference purposes only.